

343 Sansome Street

San Francisco's Premier Business Location



DESCRIPTION

- Stunning lobby
- Efficient floors: 7,000 to 25,000 sf
- Prime CBD location
- Parking available in the building
- Large, landscaped roof deck with views
- Currently up to 13,300 contiguous square feet available

Bill Cumbelich

Phone: 415.291.8882

Fax: 415.291.8208

bcumbelich@cacre.com

Daphne Spieker

Phone: 415.291.1739

Fax: 415.291.8208

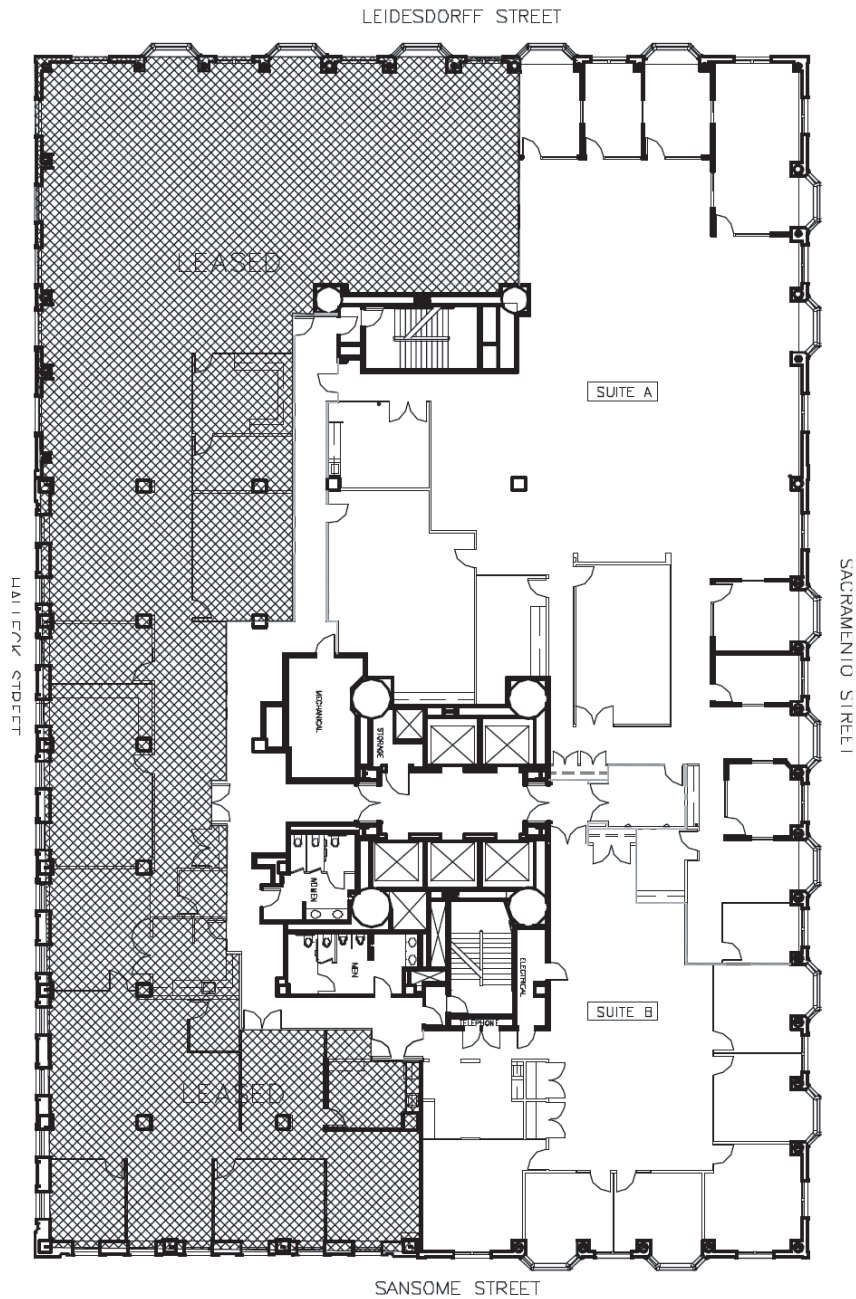
dspieker@cacre.com

PROPERTY OVERVIEW

FLOOR	SQUARE FEET	RENTAL RATE	DATE AVAILABLE	TERM	COMMENTS	FLOOR PLAN
5	13,332	Neg.	Now	3-5 years	Mix of PO's and open space, can be demised to 9,494 SF or 3,838 SF	



THE CAC GROUP
COMMERCIAL REAL ESTATE



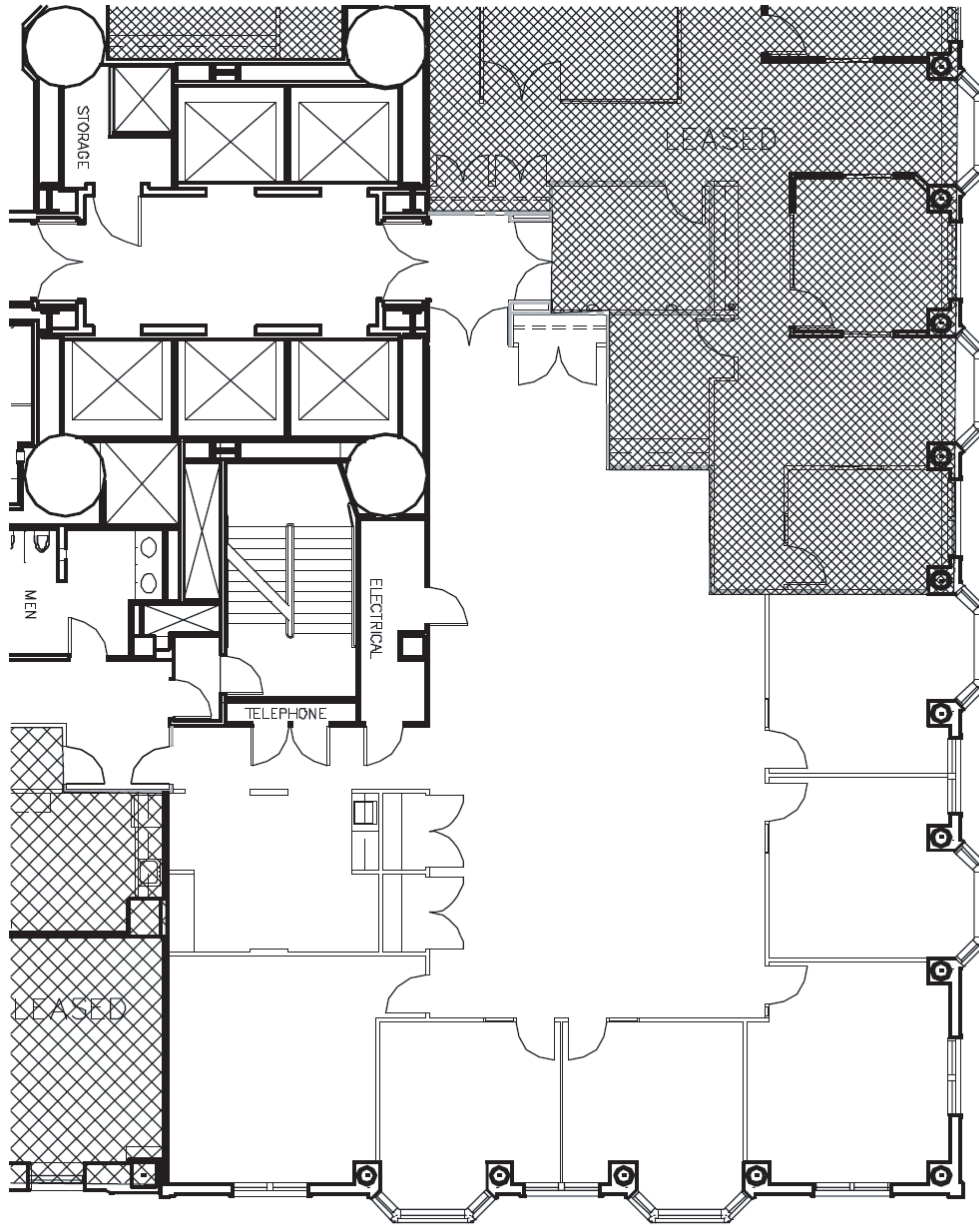
Suite 500 and 525
13,332 SF

[BACK TO MAIN PAGE](#)



THE CAC GROUP
COMMERCIAL REAL ESTATE

Bill Cumbelich | Phone: 415.291.8882
 Fax: 415 291 8208 | bcumbelich@cacre.com
Daphne Spieker | Phone: 415.291.1739
 Fax: 415 291 8208 | dspieker@cacre.com



SACRAMENTO STREET

SANSOME STREET

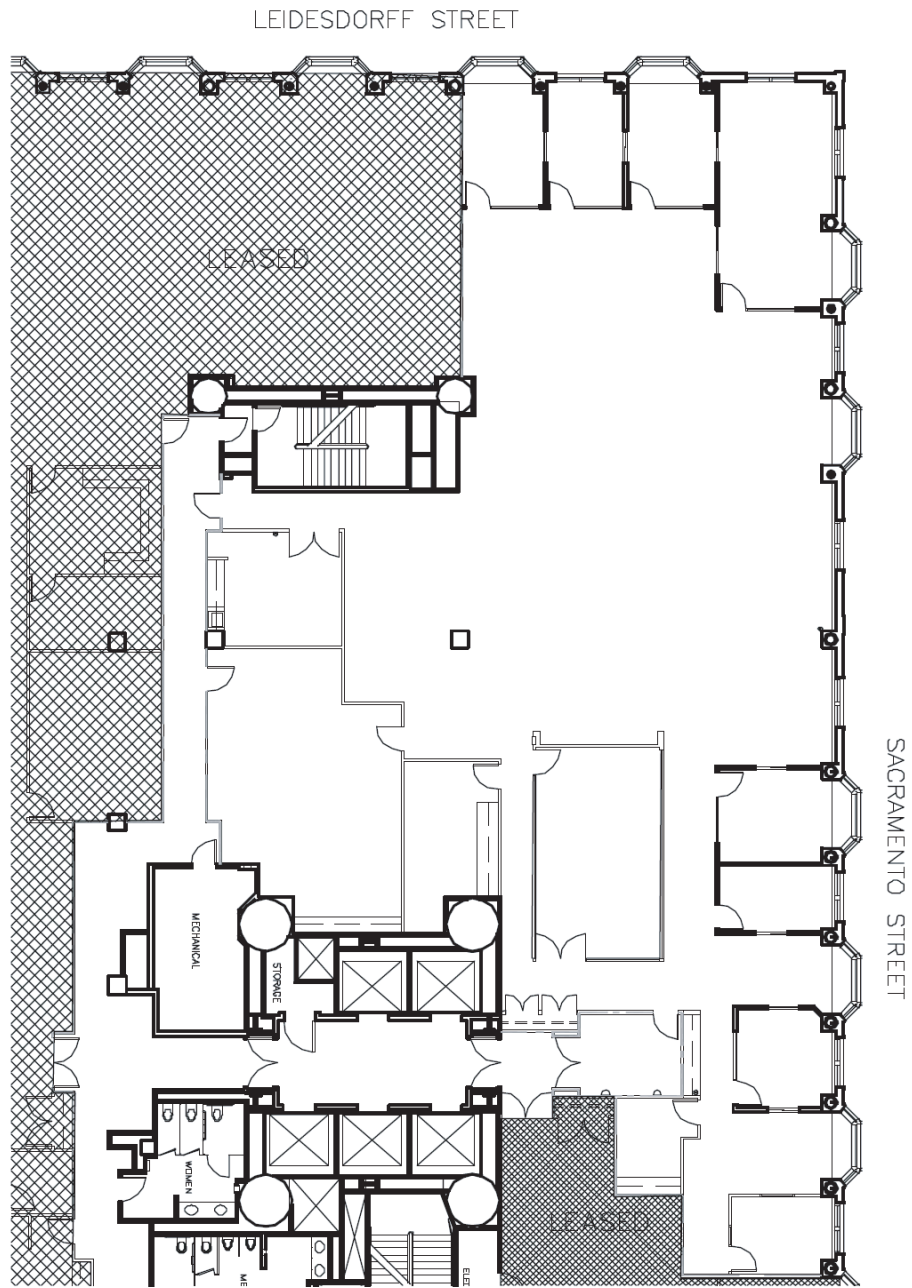
Suite 525
3,838 SF

[BACK TO MAIN PAGE](#)



THE CAC GROUP
COMMERCIAL REAL ESTATE

Bill Cumbelich | Phone: 415.291.8882
Fax: 415 291 8208 | bcumbelich@cacre.com
Daphne Spieker | Phone: 415.291.1739
Fax: 415 291 8208 | dspieker@cacre.com



Suite 500
9,494 SF

[BACK TO MAIN PAGE](#)



THE CAC GROUP
COMMERCIAL REAL ESTATE

Bill Cumbelich | Phone: 415.291.8882
Fax: 415 291 8208 | bcumbelich@cacre.com
Daphne Spieker | Phone: 415.291.1739
Fax: 415 291 8208 | dspieker@cacre.com